



UPVC | CPVC | PPH | PVDF
Pipes, Fittings & Valves

Samiplast Valves

Water Treatment &
Industry Solutions



ABOUT US

The company was established in the year of 2010, as PT Samiplast Perkasa Engineering. In the year 2018, we formed a strategy to achieve immediate business expansion with wider human resources, product offerings and customer base. Samiplast Joyomandiri PT offers a variety of comprehensive thermoplastic materials, products and accessories for a broad spectrum of markets and demanding applications. Supply high performance plastic piping systems that serve the industrial sector, and water utilities.

We offer complete piping solutions consisting of pipes, fittings, valves and connection accessories in various standards for various applications. Our materials involve Sch 40/80 PVCU, CPVC Sch40 / 80, PP-H, PVDF , PE Electro Fusion / Welded Fittings for Water & Gas Applications.

Each system is equipped with integrated system advantages. That is, customers can be sure that everything they need for their specific application. We are appointed by international manufacturing companies from the US, Europe & Asia, as reliable and quality suppliers who provide piping systems as a sustainable solution.

Supported by people who have more than 16 years of experience in the world of main piping technology in polymare pipes, we are very confident that we are all that you need.

● Manufactured Profile

Established in 1988, Huasheng Pipeline Technology Co.,Ltd is engaged in researching, developing and manufacturing all kinds of UPVC, CPVC, PE, PPH, PVDF, AGR piping systems for industrial, water supply and water treatment applications.

After years of exploration and promotion, Huasheng becomes a leading enterprise in the industry. Huasheng has been the supporting company of Jiangsu Engineering Research Center for Plastic Piping System, the member of China Plastics Piping Association and China Electronic Materials Association.

● The Strength of Company

Covering 200,000 square meters with permanent assets of RMB600 million, Huasheng has Mould Department, Piping System Department and Precision injection Department. We now have over 200 injection machines, 30 pipe extruding lines, 80 mechanical processing equipment, 6 material mixing systems, 8 granulating lines and more than 400 employees, and annual production capacity can exceed 80,000 tons.

Huasheng pipeline is committed to mold manufacturing, new materials development of plastic piping system, precision valve designation and manufacturing. We had improved industry competitiveness through technological advantages, therefore we can win the market with high quality products and high efficiency working.

● Qualification

Our company has received certifications of ISO 9001, ISO14001, NSF and SGS. Huasheng was awarded of Jiangsu Famous Trademark and has been recognized as Jiangsu High-Tech enterprise.

We have 3 Jiangsu High-Tech products, 47 authorized patents, and received other certificates such as the Manufacture License of Special Equipment People's Republic of China, the Health License of Drinking water and so on. Besides, we are selected as the supplier of National water conservancy system outstanding product tender key recommendation directory.



CERTIFICATION



QA Occupational Health Management System Certification



QA Occupational Environment Management System Certification



QA Occupational Production Management System Certification



UPVC Pipe for Industry Test Report



Production License of Special Equipment People's Republic of China



Work Safety Standardization Certificate



SGS Raw Material Test Report



Product Safety Certificate



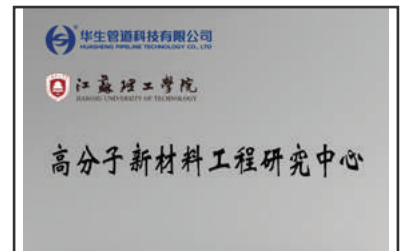
Jiangsu Province Famous Trademark Certificate



High-tech enterprise certificate



Jiangsu Engineering Technology Research Center Plastic Piping System



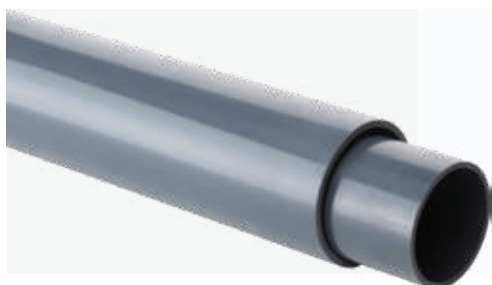
Polymer New Materials Engineering Research Center

Patent Certificate



PVC-U/C | SCH40 | SCH80 PIPE | FITTING FOR WATER TREATMENT & INDUSTRY

PVC-U/C PIPES



1/2"~24"
SCH40/SCH80

PVC-U/C FITTINGS (DIN/ASTM)



Elbow 90°
DN15~600
1/2"~24"



Elbow 45°
DN15~600
1/2"~24"



Tee
DN15~600
1/2"~24"



Reducing Tee
DN20*15~400*300
3/4"~1/2"~16"~12"



Flange Gasket
DN15~600
1/2"~24"



Cross
DN15~300
1/2"~12"



Bushing
DN20*15~400*350
1/2"~1/4"~16"~14"



Copper Threaded Tee
DN15~25
1/2"~1"



Reducer
DN20*15~400*350
3/4"~1/2"~16"~12"



Cap
DN15~400
1/2"~16"



Coupling
DN15~600
1/2"~24"



Female Adaptor
DN15~100
1/2"~24"



Male Adaptor
DN15~100
1/2"~24"



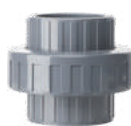
One-Piece Flange
DN15~300
1/2"~12"



Vanstone Flange
DN15~600
1/2"~24"



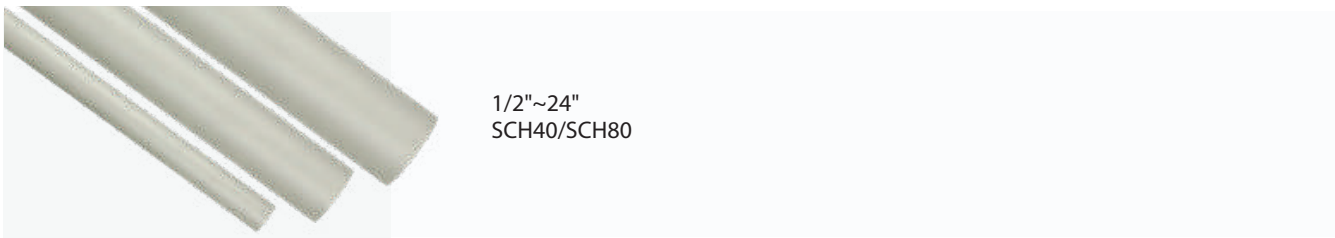
Blind Flange
DN15~600
1/2"~24"



Union
DN15~100
1/2"~4"

PPH PIPE | FITTING

PPH PIPES



PPH FITTINGS (DIN)

Butt Fusion Elbow 90°	Butt Fusion Elbow 45°	Butt Fusion 90° Tee	Butt Fusion Cap	Butt Fusion Bushing	Butt Fusion Flange
D20~400	D20~400	D20~400	D20~400	D25~125	D20~400

PP-Steel Backing Flange	Butt Fusion Adaptor	Butt Fusion Connection Adaptor	Butt Fusion Union	Socket Fusion Elbow 90°	Socket Fusion Elbow 45°
D20~400	D20~63	D20~63	D20~63	D20~110	D20~110

Socket Fusion 90° Tee	Socket Fusion Cap	Socket Fusion Bushing	Socket Fusion Coupling	Socket Fusion Flange	Socket Fusion Connection Adaptor
D20~110	D20~110	D25~110	D20~110	D15~100	D20~63



PVDF PIPE | FITTING

PVDF PIPES



20mm~225mm
PN10 | PN16

PVDF FITTINGS (DIN)



Butt Fusion Elbow 90°

D20~225



Butt Fusion Elbow 45°

D20~225



Butt Fusion 90° Tee

D20~225



Butt Fusion Cap

D20~110



Butt Fusion Bushing

D25~225



Butt Fusion Flange

D20~225



PP-Steel Backing Flange

D20~225



Butt Fusion Adaptor

D20~63



Butt Fusion
Connection Adaptor

D20~63



Butt Fusion Union

D20~63



Socket Fusion Elbow 90°

D20~110



Socket Fusion Elbow 45°

D20~110



Socket Fusion 90° Tee

D20~110



Socket Fusion Cap

D20~110



Socket Fusion Bushing

D25~110



Socket Fusion
Coupling

D20~110



Socket Fusion
Flange

DN15~100



Socket Fusion
Connection Adaptor

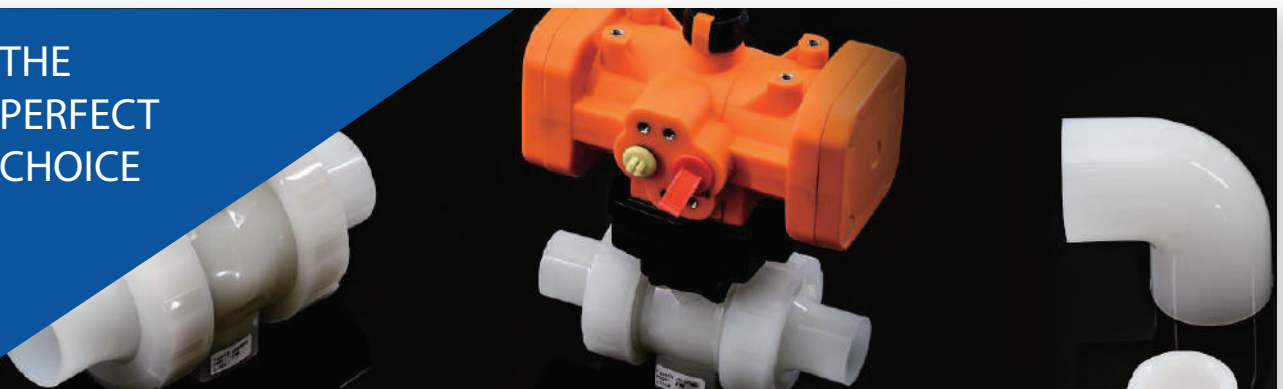
D20~63



Socket Fusion Union

D20~63

THE
PERFECT
CHOICE



UPVC | CPVC | PPH | PVDF VALVES

PVC-U/C VALVES (DIN/ASTM/JIS)



MODEL : BVU.6950.S

True Union Ball Valve
Socket | Flange Type

DN15~100

1/2"~4"



MODEL : BVU.6950.JS

Double Union Ball Valve
Socket | Flange Type JIS

DN15~100

1/2"~4"



MODEL : BVU.6950.S

Pneumatic True Union
Ball Valve
Socket | Flange Type

DN15~100

1/2"~4"



MODEL : BVU.6950.EA

Electric True Union
Ball Valve
Socket | Flange Type

DN15~100

1/2"~4"



MODEL : PRV.9050.S

Pressure
Reducing Valve
Socket | Flange Type

DN15~100

1/2"~4"



MODEL : SJM-014

Sampling Valve

DN8

1/4"



MODEL : BTV.7954.PR

Handle Butterfly
Valve

DN15~300

2"~12"



MODEL : BTV.7954.PRG

Geared Butterfly
Valve

DN15~300

2"~12"



MODEL : BTV.7950.PDA

Pneumatic Butterfly
Valve

DN15~300

2"~1/2"



MODEL : BTV.7950.PEA

Electric Butterfly
Valve

DN15~300

2"~1/2"



MODEL : DPV.6950.S

Socket Diaphragm
Valve

DN15~50

1/2"~2"



MODEL : DPV.6950.SU

True Union Diaphragm
Valve

DN15~50

1/2"~2"



MODEL : DPV.6950.F

Flanged Diaphragm
Valve

DN15~50

1/2"~6"



MODEL : SSC.9714.F

Swing Spring Check
Valve

DN50~200

2"~8"

UPVC | CPVC | PPH | PVDF VALVES

PVC-U/C VALVES (DIN/ASTM/JIS)



MODEL : WCV.8972.WF

Wafer Check Valve

DN50~200

2"~8"



MODEL : BCV.8971.ST

Socket True Union
Check Valve

DN15~100

1/2"~4"



MODEL : SCV.8971.SI

Single Union Check
Valve

DN15~100

1/2"~4"



MODEL : STK.9714.JS

Swinging Check Valve

DN50~100

2"~4"



MODEL : FTV.8872.JS

Single Union Bottom
Valve

DN15~100

1/2"~4"



MODEL : CV.6952.S

Compact Ball
Valve

DN15~50

1/2"~2"



MODEL : BTV.7953.EC

General Butterfly Valve
(Handled Type)

DN50~200

2"~8"



MODEL : BTV.7951.EG

General Butterfly Valve
(Gearing Type)

DN50~400

6"~16"



MODEL : BV.5015.BR

Socket True Union Ball
Valve (Bracket)

DN15~100

1/2"~4"



MODEL : STR.8882.JS

Y - Strainer

DN15~100

1/2"~4"



MODEL : SJM.RU.JS

Socket Rotameter

DN15~100

1/2"~4"



MODEL : PA.1660

Socket Pulsation
Damper

DN15~50

1/2"~2"



MODEL : PTATD

DA Pneumatic
Actuator

DN50~100

2"~4"



MODEL : SOL-V4M310-08

Solenoid Valve DC24V
& VAC220



MODEL : LS - APL210N

Limit Switch 230VAC

PPH VALVES (DIN)



MODEL : BBP.5950.ST

Butt Fusion True Union Ball Valve

DN15~100



MODEL : BSP.5950.ST

Socket Fusion True Union Ball Valve

DN15~100



MODEL : BBP.5950.PDA

Butt Fusion Plastic Pneumatic True Union

DN15~100



MODEL : BSP.5950.PDA

Socket Fusion Plastic Pneumatic True Union Ball Valve

DN65~150



MODEL : DVP.6950.S

Butt Fusion Diaphragm Valve

DN15~50



MODEL : DBP.6950.PS

Butt Fusion Plastic Pneumatic Diaphragm Valve

DN15~50



MODEL : DSP.6950.PS

Socket Fusion Plastic Pneumatic Diaphragm Valve

DN50~200



MODEL : BVP.7954.PRG

Geared Eccentric Butterfly Valve

DN50~300



MODEL : BVP.7954.PR

Handled Eccentric Butterfly Valve

DN50~300



MODEL : BVP.7954.PR

Pneumatic Eccentric Butterfly Valve

DN50~300

PVDF VALVES (DIN)



MODEL : BBPF.6950.S

Butt Fusion True Union Ball Valve

DN15~50



MODEL : BSPF.6950.S

Socket Fusion True Union Ball Valve

DN15~50



MODEL : BBPF.6950.PS

Butt Fusion Plastic Pneumatic True Union Ball Valve

DN15~50



MODEL : BSPF.6950.PS

Socket Fusion Plastic Pneumatic True Union Ball Valve

DN15~50



MODEL : DBPF.5950.S

Butt Fusion Diaphragm Valve

DN15~50



MODEL : DSPF.5950.S

Socket Fusion Diaphragm Valve

DN15~50



MODEL : DSPF.5950.QOP

Quick Operated Pneumatic Diaphragm Valve (PVA)

3/8"



MODEL : DBPF.5950.PS

Butt Fusion Plastic Pneumatic Diaphragm Valve

DN15~50



MODEL : DSPF.5950.PS

Socket Fusion Plastic Pneumatic Diaphragm Valve

DN15~50



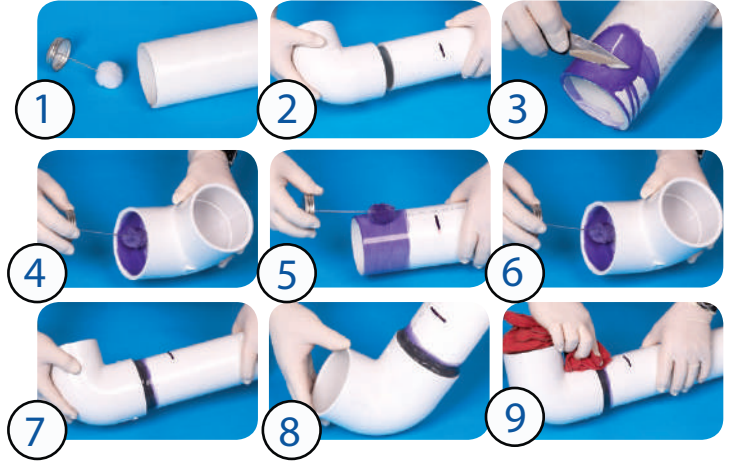
MODEL : LS - APL210N

Flange Gasket EPDM/FPM

DN50~400



GUIDE TO SOLVENT WELDING PVC & CPVC Plastic Pipe & Fittings



All low VOC All the Time

- o Plastic Pipe Cement, Primer & Cleaners
- o Speciality Products
- o Applicators & Accessories

Product Type	Color	Product Code	Nominal Pipe Size															
			20	25	32	40	50	63	75	90	110	160	200	250	315	385	600	800
Primer	White	p70																
	White	p88																
Specialty	White	750***	ALL CLASSES & SCHEDULES EXCEPT SCHEDULES 80															
	White	790**																
	White	763*	FOR STYRENE - RUBBER (SR) PLASTIC DRAIN PIPE ONLY															
ABS	White	771	ALL CLASSES & SCHEDULES															
	White	772	ALL CLASSES & SCHEDULES															
CPVC	Yellow	Flow® Guard Glow	CTS															
	Yellow	Flow® Guard Glow	CTS															
	Gray	729																
	Orange	724†																
	Orange	714																
SPECIALTY CEMENT	Blue	713	CTS															
	Blue	798																
	Blue	795																
	Blue	748†																
	Blue	737†																
	Blue	738†																
	Blue	737†																
	Blue	738†																
	Blue	735†																
	Blue	727†																
PVC	Blue	725†																
	White	719																
	White	717																
	White	711																
	Blue	721																
	Blue	705																
	Blue	704																
REGULAR BODY	Clear	710																
	Clear	702																
	Clear	700																

WELD-ON SELECTION GUIDE

For assistance in selecting the right Weld-On products of your application, please refer to the selection guide.

Pipe Format

- Schedule 40/PN3.2, PN4, PN6
- Schedule 80/PN10, PN16

† Can be used without a primer with fittings having an interference fit (unless primer required by local code).

◊ For CPVC and PVC Chemical Piping Systems

ª FlowGuard® and FlowGuard dGold® are registered trademarks of The Lubrizol Corp.

* Styrene Pipe

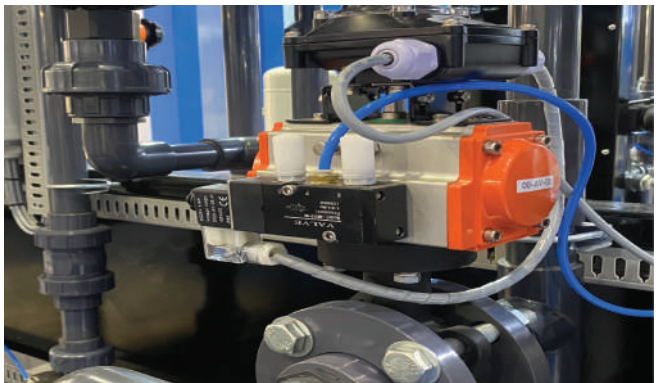
** PVC, CPVC, ABS and Styrene Pipes

*** ABS to PVC Transition Joints

CTS Copper Tube Size



PRODUCT TO APPLICATIONS



INTERNATIONAL STANDARIZATION



COMPARISON CHART - PIPING SIZING

DN		SNI	OD		
INCH	mm		DIN	JIS	ASTM
1/2"	15	20	20	22	21.3
3/4"	20	25	25	26	26.7
1"	25	32	32	32	33.4
1-1/4"	32	40	40	38	42.2
1-1/2"	40	50	50	48	48.3
2"	50	63	63	60	60.3
2-1/2"	65	75	75	76	73.0
3"	80	90	90	89	88.9
		125	125		
4"	100	140	140	140	141.3
		160	160	165	168.3
5"	125	180	180		
		200	200	216	219.1
6"	150	225	225		
		250	250	267	273.0
8"	200	280	280		
		315	315	318	323.9
10"	250	355	355	370	355.6
12"	300	400	400	420	406.4
14"	350	450	450	470	457.2
16"	400	500	500	520	508.0
18"		560	560		
20"	500	630	630	630	609.6
22"					
24"	600				

CONVERT PSI TO BAR

Psi (psi)	Bar
0.01	0.000689 bar
0.1	0.006894 bar
1	0.068947 bar
2	0.137895 bar
3	0.206842 bar
5	0.344737 bar
10	0.689475 bar
20	1.378951 bar
50	3.447378 bar
100	6.894757 bar
1000	6.894757 bar

1 psi = 0.068947 bar

1 bar = 14.50377 psi

Example: convert 15

15 psi = 15 × 0.06894



PT SAMIPLAST JOYO MANDIRI

UPVC | CPVC | PPH | PVDF | Pipes, Fittings & Valves Jalan Sumatera No 132 Jombang Rawalele, Kec. Ciputat Kota Tangerang Selatan 15414, Banten Province – Indonesia



+6221 2762 2822

+6221 2762 2851



+6221 7486 3139



sales@samiplast.co.id

SHOWROOM

UPVC | CPVC | PPH | PVDF | Pipes, Fittings & Valves Harco Glodok Lt.1 Blok E No 2, Jl Hayam Wuruk No 2-5 Mangga Besar – Jakarta



+ 6281 3141 33588

+ 6281 2864 0669

Authorized Distributor

For CPVC Pipes | Fittings | Valves | Sheet

Authorized Distributor

UPVC | CPVC | PPH | PVDF

